

# Motion Pictures

## Kevin CK Lo

Please direct all inquiries to: [contact@kevincklo.com](mailto:contact@kevincklo.com)

Each photographic print is an edition of 20

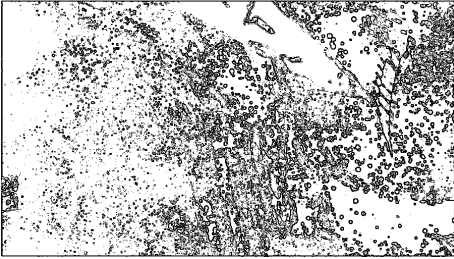
Artists' Television Access,  
992 Valencia St, SF

On view September 1st through 30th, 2019

Opening night performances by:  
Angst Hase Pfeffer Nase  
Turner Capehart Canty

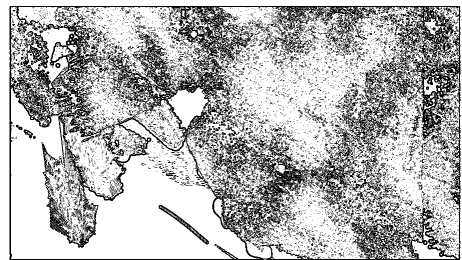
WENDY LOTTERMAN\_1

"Dispense the matte affect immediately"



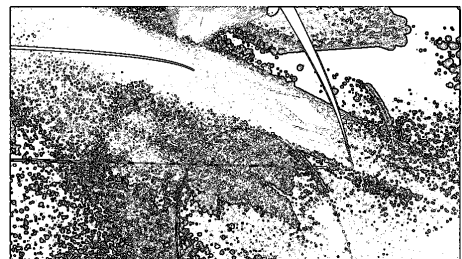
"to cruise the temperamental center, splintering the ball of a permanently addressable sun"

WENDY LOTTERMAN\_2



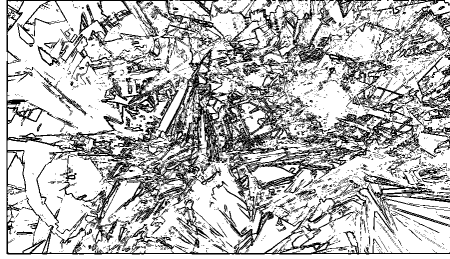
"You are both highly skeptical of ferns like transformative, emanopatory, autonomous"

CLAIRE GROSSMAN\_1



"flowing between mark making and energetic forces external to, and yet also integrated inside the mark-making"

CHRISTINA MCPHEE\_1



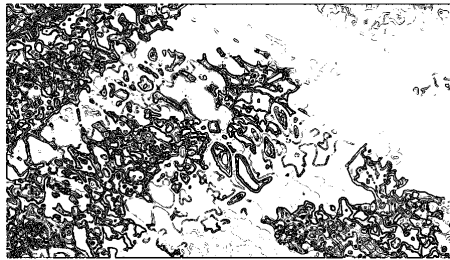
"internally at least, riotous"

HOWARD BARKER\_1



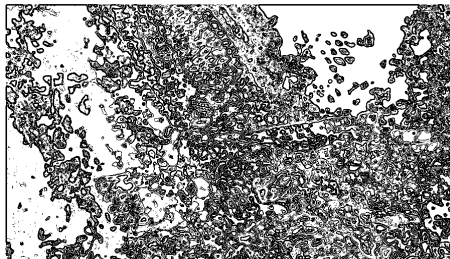
"The first aesthetic is to overwhelm the resistance of the public"

HOWARD BARKER\_2



"as a possible poet began to disintegrate"

KEVIN KILLIAN\_1



"give me the instants induced in your minds when they explore the basic principles of Saturn"

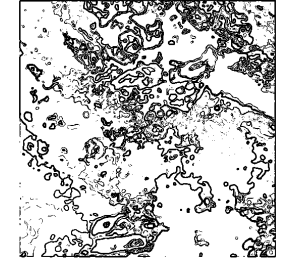
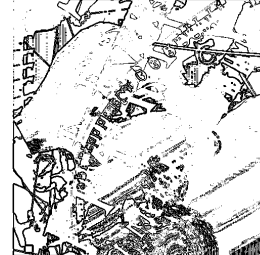
WILL ALEXANDER\_1

untitled (2018)



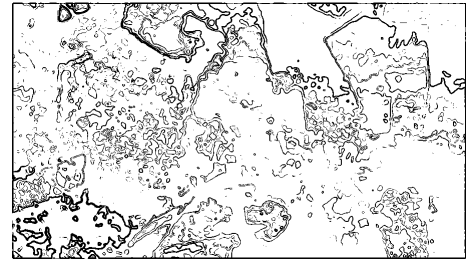
RP BOO\_1

"Sounds, that's what the speakers R 4"



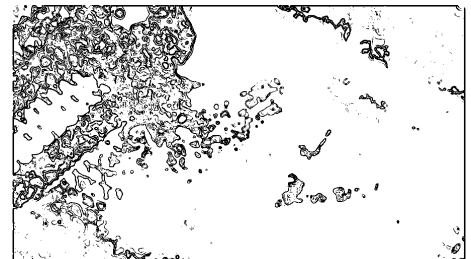
GEMMA CORRADI FIUMARA\_1

"ways of trying to inhabit fields which previously appeared as opaque and unapproachable"



"The ground is no more stable than the delicate structure of support whose surface is as a drum"

CHRISTINA MCPHEE\_2



"You had demands on money, on presumptions of value, distal pressure on fat dream"

ALEX CRUSE\_1